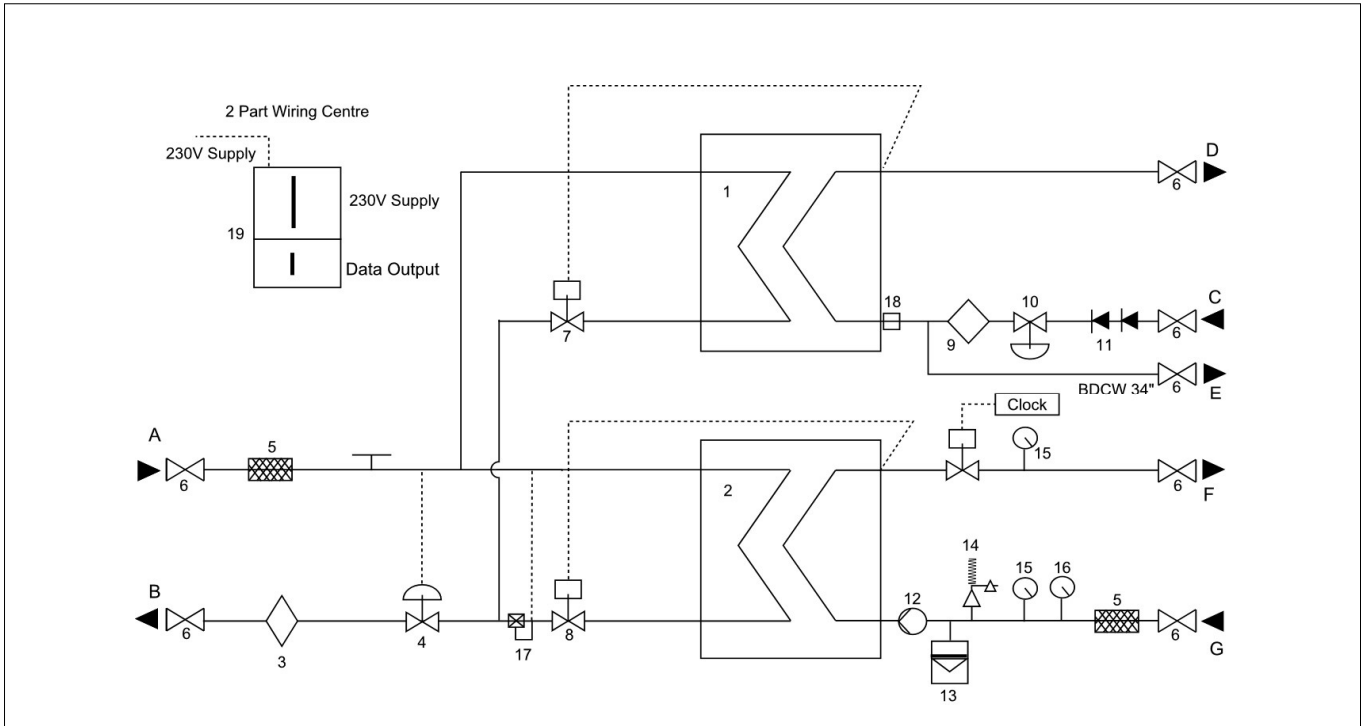


Typical Dual Indirect System - Consumer Interface Unit



Surface Mounted Cabinet

White, polyester powder coated, RAL 9016
 Dimensions: 600mm x 1100mm x 280mm (Width x Height x Depth)

Weight Without Cover: 35 Kg Weight With Cover: 42 Kg

Options (Not Shown)

Separate Towel Rail Circuit (summer use)
 Secondary Hot Water Return Loop
 Landlords 230V Control Valve (remote shut off)

- A. Primary Heating Flow
- B. Primary Heating return
- C. Boosted Cold Water Supply In
- D. DHWS to Apartment
- E. Boosted Cold Water to Apartment
- F. Secondary Heating Flow
- G. Secondary Heating Return

- 1. Stainless Steel Heat Exchanger DHWS
- 2. Stainless Steel Heat Exchanger Heating
- 3. Kamstrup Energy Meter
- 4. Differential Pressure Regulator
- 5. Primary Filter
- 6. Isolating Ball Valves
- 7. DHWS Thermostatic Control Valve
- 8. Heating – Thermostatic Control Valve
- 9. Domestic Cold Water Meter
- 10. Cold Water Pressure Reducing Valve & Gauge
- 11. Cold Water Double Check Valve
- 12. Pump Secondary Heating
- 13. Heating Expansion Vessel
- 14. Safety Relief Valve
- 15. Pressure Gauge
- 16. Temperature Gauge
- 17. Thermostatic Bypass Valve
- 18. Cold Water Flow Regulator
- 19. 2 Part Wiring Centre:
 Data Collection
 Heating Control
- 20. Not Shown – Drain Points
- 21. Not Shown – Air Vents

Duty (Primary) Domestic Hot Water Mode	Heat Transfer Capacity Flow Rate Fluid Temp On Fluid Temp Off	35 kW 0.15 kg/s 80 °C 24 °C
Duty (Secondary) Domestic Hot Water service	Heat Transfer Capacity Flow Rate Fluid Temp On Fluid Temp Off	35 kW 0.21kg/s 10 °C 50 °C
Duty (Secondary) Heating	Capacity Max Pressure Drop (HIU+Radiator Circuit) Flow Rate Fluid Temp On Fluid Temp Off	10 kW 15 Kpa 0.06 kg/s 80 °C 40 °C
Pressure	Primary Working Primary Test Secondary Working Secondary Test	6.0 bar 10.0 bar 3.0 bar 7.0 bar
Connections	Primary Flow Primary Return Secondary DHW Flow Secondary Heating Flow Secondary Heating Return	20 mm 20 mm 22 mm 22 mm 22 mm